



Coming To Winterberry Via Zoom
Next Wednesday 11/10/21 @ 12:00

Curative Educator, Robyn Brown is the author of *A Practical Guide to Curative Education: The Ladder of the Seven Life Processes*. After teaching a grades cycle, Robyn decided to apprentice in Curative Education with Sunny Baldwin at Somerset School in Colfax, CA. In 2002, she started Mulberry Classroom, which began in San Francisco and is currently located in Santa Rosa. Robyn currently teaches in various Waldorf teacher trainings and serves as a mentor to Waldorf schools while living in Gold Beach, Oregon with her wife, two horses, and three dogs.



Curative education is an interdisciplinary approach to providing holistic support to children, adolescents and young adults who encounter significant challenges on their individual path of development. Curative Education includes education and therapies, but also a recognition that a child's lifestyle and overall life situation can help or hinder development. Curative educators do not look at classroom or therapy settings in isolation, but work with the totality of a child's life circumstances. Like Waldorf education, curative education was a part of Rudolf Steiner's work.

Parents are encouraged to attend the Zoom at Noon to hear a presentation prepared for our community. There will be time for Q&A at the end.
If you have any questions, please contact Ms. Pepe-Phelps pepe_julie@asdk12.org

Title "Helping Children to Flourish By Nourishing The Roots; Practical Ways to Support Children to Become Their Best Academically, Socially and Emotionally."

Time: Wednesday 11/10/21 at noon

Join Zoom Meeting

<https://asdk12.zoom.us/j/94862216462?pwd=bzEyZ1JSV0Nvd0hyZVpKRndiMEhWdz09>

Meeting ID: 948 6221 6462

Passcode: 059544

Nurse's Corner

Reporting Absences

If your child is going to be late or absent, please contact your teacher and the front desk. Only the front desk has the ability to mark the tardy/absence as excused in the database. If your student is absent due to sickness, also notify Nurse Katrina. seater_katrina@asdk12.org
907-742-8224 direct line

Also call in your student's absence as excused in the event they are quarantined or staying home for Covid-19 related issues. We have a growing number of students that have 5 or more unexcused absences, and we want to make sure we mark them excused if they are positive or experiencing symptoms.

morris_colleen@asdk12.org
907-742-0139



What is Lantern Walk?

The lantern walk is a special event for the Winterberry Community. We gather, sing together and walk with our lanterns through a luminary lit path in the woods. Although darkness has come with the winter months, we remind ourselves through companionship and song that we all possess an inner light that sustains us through the dark months.

In Germany and through much of Europe Lantern Walks are conducted in November to commemorate the kind works St. Martin. St. Martin is well remembered for his generosity and charity to the poor. With this in mind Winterberry will conduct a **food drive for our Winterberry Family Pantry. Donations can be dropped off now until Winter Break**

Feel free to bring donations of canned and

dry goods to the front desk.

Please send in: 3 votive candles (not tea lights) with each of your children by November 17th (the sooner the better).

Dates to Remember

Winterberry Charter Council
will meet via zoom
November 18th
6:00pm

Time: 3rd Thursday of the month at 6pm

Topic: Winterberry Charter Council

Time: 6pm

Join Zoom Meeting

<https://asdk12.zoom.us/j/519426010>

Winterberry Parent Guild
will meet via zoom
Tonight
6:00pm

Time: 1st Thursday of the month at 6pm

Topic: WPG Zoom Meeting

Join Zoom Meeting

<https://asdk12.zoom.us/j/95290064733?pwd=ZEFyVXV1RCsyV1NPK3lHVnlEeTdYZz09>

Meeting ID: 952 9006 4733

Passcode: WPG

**Inservice
Day
NO
SCHOOL
for
students
November
11th**

**Lantern
Walk
All School
Event
November
19th
6:30pm**

**Thanksgiv
ing Break
NO
SCHOOL
for
students
November
25 and 26th**

COVID-19 Vaccination Clinics
Pfizer and Moderna 1st, 2nd, and Boosters available

Walk-in Clinics

Location:
ASD Education Center, in the Atrium
5530 E. Northern Lights Blvd., Anchorage, AK 99504

Time: 2 to 8 p.m.


Wednesday, Nov. 3	Monday, Nov. 22
Thursday, Nov. 4	Tuesday, Nov. 23
Friday, Nov. 5	Wednesday, Nov. 24
Monday, Nov. 8	Monday, Nov. 29
Tuesday, Nov. 9	Tuesday, Nov. 30
Wednesday, Nov. 10	Wednesday, Dec. 1

Drive-through clinics

Chugiak High School:
Saturday, Nov. 6, 10 a.m. to 4 p.m.

Service High School:
Saturday, Nov. 13, 10 a.m. to 4 p.m.

Bettye Davis East Anchorage High School:
Saturday, Nov. 20, 10 a.m. to 4 p.m.




Watercolor in the halls



Hybrid



Grade 5



Grade 6



Kindergarten

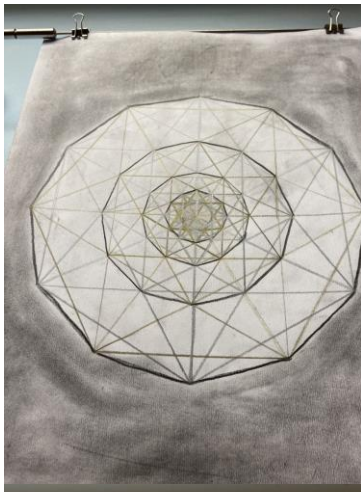


Grade 1



Grade 2

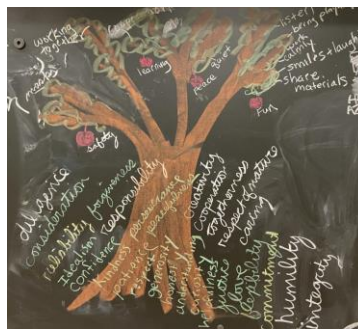
Drawings in the classrooms



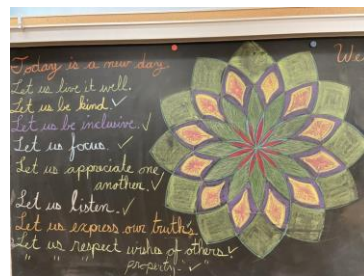
Teacher's chalkboard drawings



Grade 6



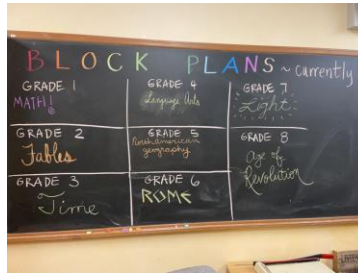
Grade 5



Grade 4



Grade 2



Block Plans



Grade 1

[Donate to GARDEN](#)

[Log your Volunteer hours](#)